

APPENDIX 6

PROPOSED OFFICE FIT OUTS AT K.R.A.

CBC, UPPERHILL

DATA & STRUCTURED CABLING LAYOUTS

MAY 2020

| SYMBOL | LUMINAIRES |
|--------|-------------------------------------------------------------------------------------------------------------------------------------------------------------------|
| | 32W 600X600MM CEILING RECESSED LED FITTINGS SLIM PROFILE AS ROBUS SPACE LED PANEL LIGHTS R326060LED-CW OR EQUAL AND APPROVED, TYPE 2C |
| | DITTO AS TYPE 2C VERSION BUT WITH EMERGENCY KIT AS ROBUS SPACE LED R326060LED-CWE, TYPE 2CE. |
| | 45W 600X600MM ANALOGUE DIMMABLE CEILING RECESSED LED FITTINGS SLIM PROFILE AS ROBUS SPACE LED PANEL LIGHTS R456060LED-CWAD OR EQUAL AND APPROVED, TYPE 2B |
| | DITTO AS TYPE 2B VERSION BUT WITH EMERGENCY KIT, TYPE 2BE. |
| | 6W LED PICTURE LIGHT AS EGLD IMENE 92095 OR EQUAL AND APPROVED EQUIVALENT. TYPE PCL |
| | RECTANGULAR RECESSED (85MMX 150MM) WITH ALUMINIUM FINISH ADJUSTABLE DOWNLIGHT WITH 2X35W GU10 LAMP AS MASSIVE APOLLO 59502/48/10 OR EQUAL AND APPROVED. TYPE D1A. |
| | ALUMINIUM FINISH MAIN VOLTAGE DIE CAST ADJUSTABLE DOWNLIGHT WITH 50W GU10 LAMP AS MICROMARK MM31216 OR EQUAL AND APPROVED. TYPE D1. |
| | CEILING RECESSED 25W LED DOWNLIGHT AS ROBUS ETERNITY R2530DL OR EQUAL AND APPROVED EQUIVALENT, AS TYPE D2. |
| | DITTO AS TYPE D2 VERSION BUT WITH EMERGENCY KIT, TYPE D2E. |
| | LX28W T5/T16 BARE BATTEN FLUORESCENT FITTING WITH HIGH FREQUENCY BALLAST ASTHORN POPPACK PRO 96239876. TYPE 4 |
| | CEILING MOUNTED MAINTAINED LED EXIT SIGN AS ROBUS LED BLADE RE430M-01 2711 OR EQUAL AND APPROVED. TYPE EXIT. |

| SYMBOL | INSTRUMENTS |
|--------|-------------------------|
| | KILOVOLT AMPERE METER |
| | VOLT-METER |
| | AMMETER |
| | KPLC CUTOUPS |
| | KPLC METERING EQUIPMENT |

| SYMBOL | WIRING ACCESSORIES |
|--------|--------------------------------------------------------------------------------------------------------------------------------------|
| | LIGHTING SWITCH - ONE GANG ONE WAY |
| | LIGHTING SWITCH - ONE GANG ONE WAY ARCHITRAVE |
| | LIGHTING SWITCH - ONE GANG TWO WAY |
| | LIGHTING SWITCH - TWO GANG ONE WAY |
| | LIGHTING SWITCH - TWO GANG ONE WAY ARCHITRAVE |
| | LIGHTING SWITCH - TWO GANG TWO WAY |
| | LIGHTING SWITCH - THREE GANG ONE WAY |
| | LIGHTING SWITCH - THREE GANG TWO WAY |
| | LIGHTING SWITCH -FOUR GANG ONE WAY |
| | LIGHTING SWITCH GANG |
| | LIGHTING SWITCH -ONE GANG ONE WAY DIMMER |
| | 13A TWIN MOULDED SWITCHED SOCKET PLATE @ 300mm |
| | 13A SINGLE MOULDED SWITCHED SOCKET PLATE @ 300mm AFFL |
| | 13A 240V TWIN SOCKET OUTLET ABOVE WORK TOP |
| | 15A SINGLE SOCKET PLATE |
| | 13A 240V FUSED UNSWITCHED SOCKET OUTLET |
| | SINGLE PHASE INDUSTRIAL SOCKET, (RATING AS INDICATED). |
| | TELEVISION OUTLET |
| | 13A NON STANDARD TWIN MOULDED SWITCHED |
| | DITTO AS ABOVE BUT SINGLE MOULDED (UPS POWER). |
| | RJ45 OUTLET FOR DATA |
| | RJ45 OUTLET FOR TELEPHONE |
| | AUDIO VISUAL OUTLET (MOUNTED ON TABLE) WITH 1No. TWIN SOCKET OUTLET,1No.DUAL DATA CAT 6A RJ45 OUTLET,1No.HDMI OUTLET,1No.VGA OUTLET. |
| | LOCAL AREA NETWORK CABINET |
| | LAN WIRELESS STATION WITH SINGLE 13A SOCKET (NON SWITCHED) AND SINGLE CAT6A RJ45 OUTLET |
| | 20A DP SWITCH WITH NEON INDICATOR |
| | FLOOR BOX WITH 1 NO. TWIN STD SOCKET, SINGLE RJ45 FACE PLATE AND HDMI FACE PLATE |

| SYMBOL | SWITCHGEAR |
|--------|-----------------------------------------------------------------|
| | THREE PHASE ISOLATOR (RATING AS INDICATED) AS MEM |
| | SINGLE PHASE ISOLATOR (RATING AS INDICATED) AS MEM |
| | ISOLATOR (RATING AS INDICATED) AS MERLIN GERIN |
| | MCCB (RATING AS INDICATED) |
| | MCB/MCCB (RATING AS INDICATED) |
| | CONSUMER UNIT |
| | EARTHING POINT |
| | DISTRIBUTION BOARD TO SPECIFICATIONS |
| | SUB-MAIN L.V. SWITCH BOARD TO SPECIFICATIONS |
| | EARTH LEAKAGE CIRCUIT BREAKER (RCBB/RCD) |
| | 600 x 600 x 600mm POWER MANHOLE WITH CAST IRON FRAME AND COVER. |
| | 250 x 200 x 200mm METALCLAD FLUSH MOUNTED POWER ADAPTABLE BOX |

| SYMBOL | FIRE ALARM & SECURITY INSTALLATIONS |
|--------|---------------------------------------------------------------------------------------------------------------------------|
| | ADDRESSABLE FIRE ALARM BREAK GLASS MANUAL CALL POINT AS & SOUNDER AS MENVIER MOUNTED AT 1400mm& 2100 A.F.F.L RESPECTIVELY |
| | FIRE ALARM PANEL |
| | ADDRESSABLE SECURITY ALARM BREAK GLASS MANUAL CALL POINT AS MENVIER MOUNTED AT 1400mm A.F.F.L |
| | PANIC BUTTON |
| | ADDRESSABLE IONISATION SMOKE DETECTOR AS MENVIER CEILING/SLAB MOUNTED |
| | ADDRESSABLE IONISATION HEAT DETECTOR AS MENVIER CEILING/SLAB MOUNTED |
| | REQUEST TO EXIT |
| | INTRUDER DETECTION SYSTEM KEYPAD |
| | CCTV CAMERA POINT WALL MOUNTED |
| | CCTV CAMERA POINT CEILING MOUNTED |
| | PASSIVE INFRARED POINT WALL MOUNTED |
| | PASSIVE INFRARED POINT CEILING MOUNTED |
| | CARD READER/BIOMETRIC READER |
| | MAGNETIC CONTACT |
| | MAGNETIC LOCK |
| | VERRIDE SWITCH (KEYED) |
| | CCTV MONITOR |

NOTES

| REV | REVISIONS | SIGN | DATE | APPROVED |
|-----|-----------|------|------|----------|
| | BY | | | |
| | CHECKED | | | |
| | BY | | | |
| | CHECKED | | | |
| | BY | | | |
| | CHECKED | | | |

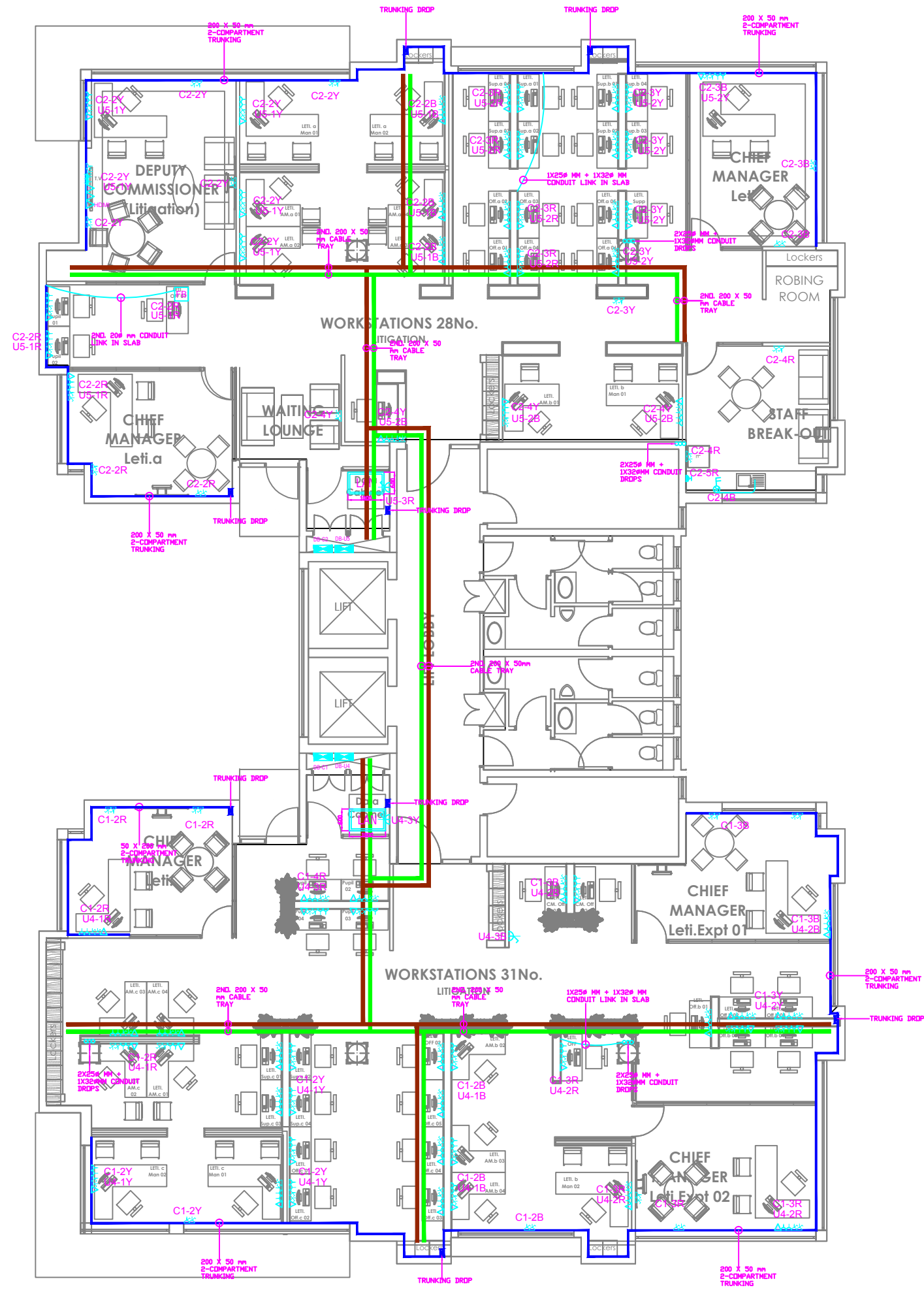
Client
KENYA REVENUE AUTHORITY

Project
PROPOSED INTERIOR DESIGN FIT OUT FOR KRA, CBC UPPERHILL, NAIROBI

Architects

Drawing Title
PHASE 1 -ELECTRICAL INSTALLATIONS
ELECTRICAL LEGEND & SYMBOLS

| | |
|--------------|---------------------------------------|
| Designed by | Drawn by |
| Checked by | Approved by |
| Scale N.T.S. | Date APRIL 2020 |
| Job No. 1806 | ACAD File: 1806-000-P |
| STATUS | DRAWING No. 1806 -KRA Offices-E-000-P |



NOTES

| REV | REVISIONS | SIGN | DATE | APPROVED |
|-----|-----------|------|------|----------|
| | BY | | | |
| | CHECKED | | | |
| | BY | | | |
| | CHECKED | | | |
| | BY | | | |
| | CHECKED | | | |

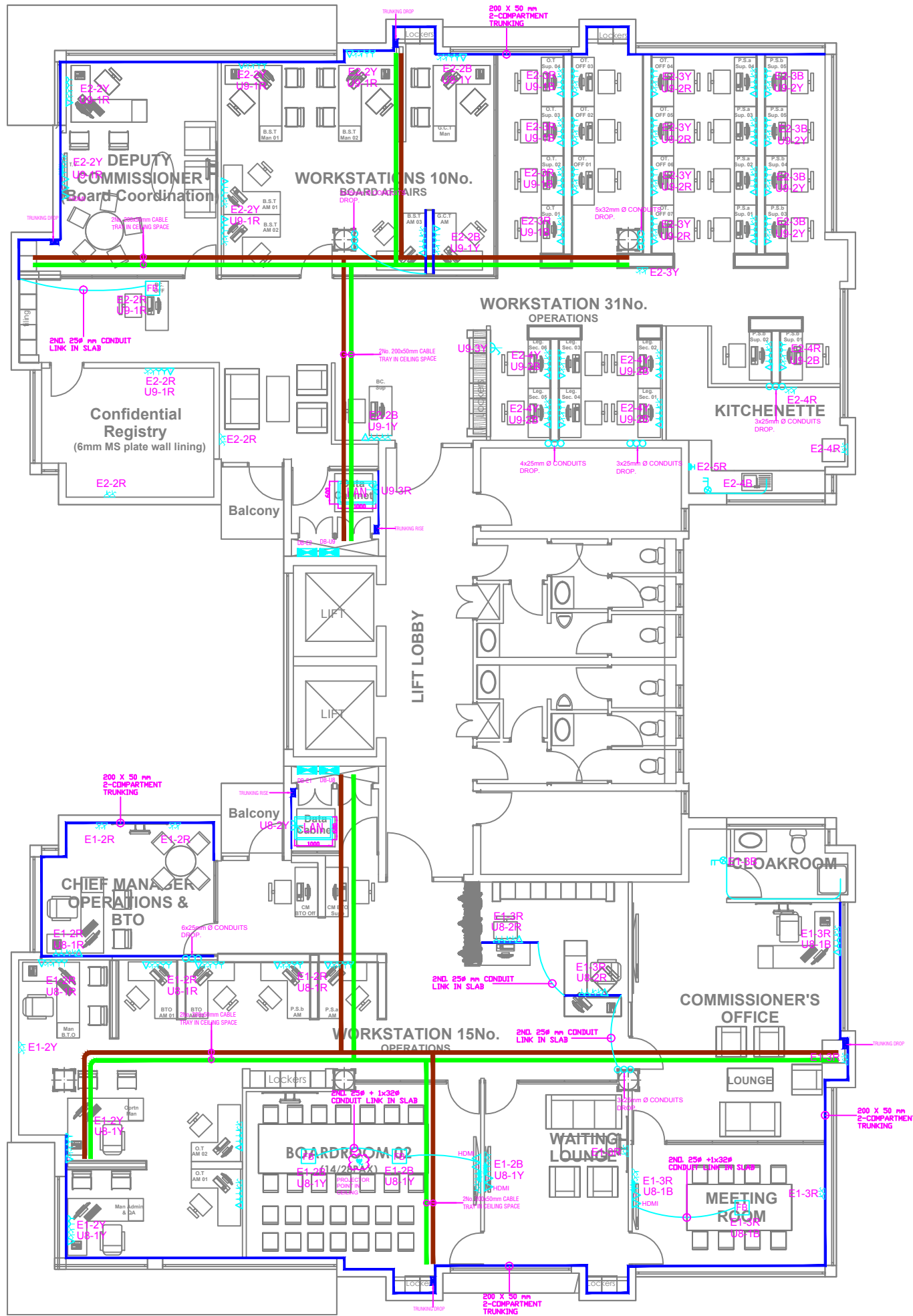
Client
KENYA REVENUE AUTHORITY

Project
PROPOSED INTERIOR DESIGN FIT OUT FOR KRA,
CBC UPPERHILL, NAIROBI

Architects

Drawing Title
PHASE 1 - ELECTRICAL INSTALLATIONS
POWER LAYOUT
THIRD FLOOR

| | |
|-----------------------------------------------|-----------------------|
| Designed by | Drawn by |
| Checked by | Approved by |
| Scale N.T.S. | Date APRIL 2020 |
| Job No. 1806 | ACAD File: 1806-002-P |
| STATUS: DRAWING No. 1806 -KRA Offices-E-002-P | REV |



NOTES

| REV | REVISIONS | SIGN | DATE | APPROVED |
|-----|-----------|------|------|----------|
| | BY | | | |
| | CHECKED | | | |
| | BY | | | |
| | CHECKED | | | |
| | BY | | | |
| | CHECKED | | | |

Client
KENYA REVENUE AUTHORITY

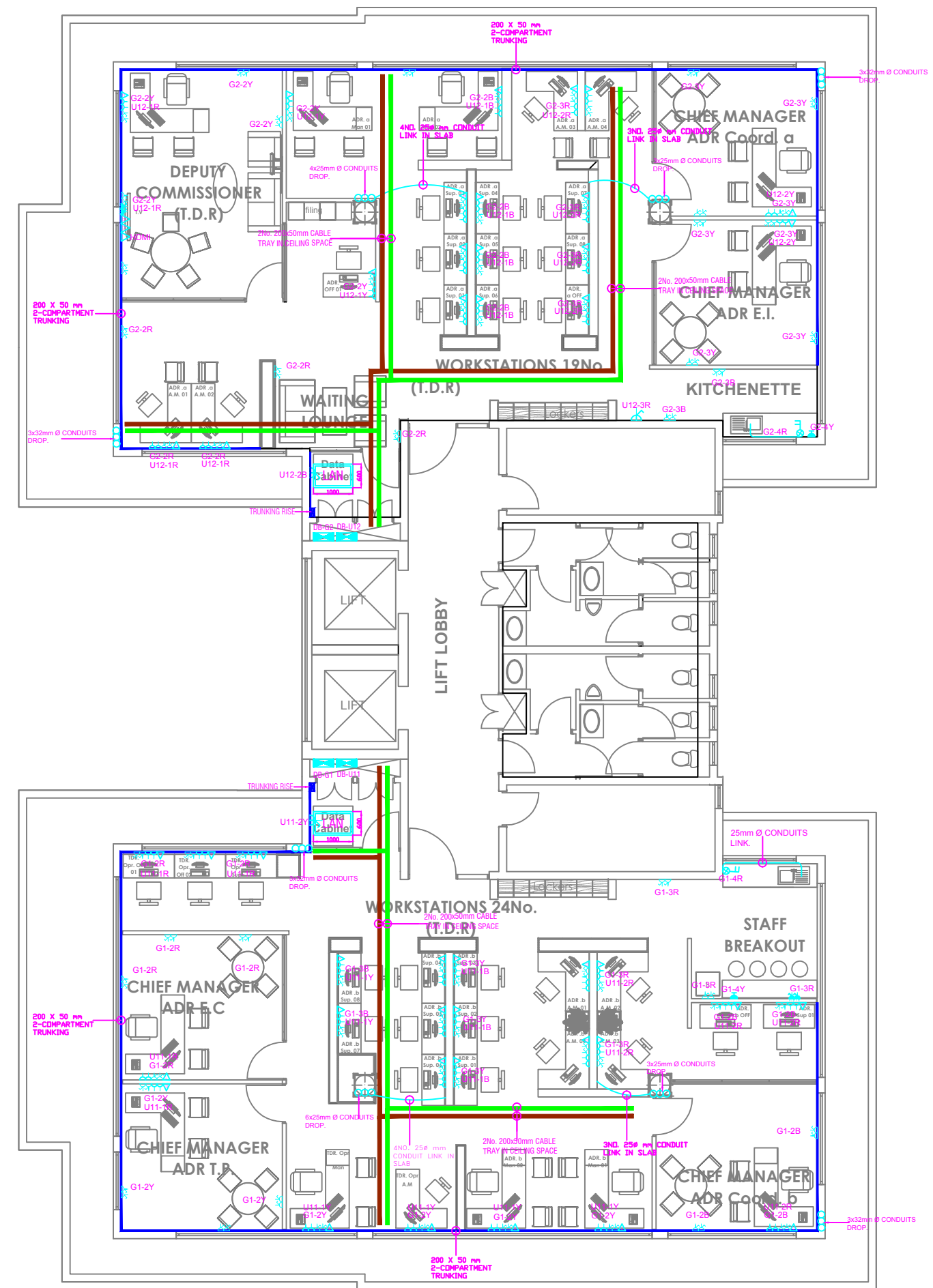
Project
PROPOSED INTERIOR DESIGN FIT OUT FOR KRA,
CBC UPPERHILL, NAIROBI

Architects

Drawing Title
PHASE 1 - ELECTRICAL INSTALLATIONS
POWER LAYOUT
FIFTH FLOOR

| | |
|-----------------------------------------------|-----------------------|
| Designed by | Drawn by |
| Checked by | Approved by |
| Scale N.T.S. | Date APRIL 2020 |
| Job No. 1806 | ACAD File: 1806-005-P |
| STATUS: DRAWING No. 1806 -KRA Offices-E-005-P | REV |

NOTES



| REV | REVISIONS | SIGN | DATE | APPROVED |
|-----|-----------|------|------|----------|
| | BY | | | |
| | CHECKED | | | |
| | BY | | | |
| | CHECKED | | | |
| | BY | | | |
| | CHECKED | | | |

Client
KENYA REVENUE AUTHORITY

Project
PROPOSED INTERIOR DESIGN FIT OUT FOR KRA, CBC UPPERHILL, NAIROBI

Architects

Drawing Title
ELECTRICAL INSTALLATIONS
POWER LAYOUT
SEVENTH FLOOR

| | |
|-----------------------------------------------|--------------------------------------|
| Designed by | Drawn by |
| Checked by | Approved by |
| Scale N.T.S. | Date APRIL 2020 |
| Job No. 1806 | ACAD File: 1806 -KRA Offices-E-008-P |
| STATUS: DRAWING No. 1806 -KRA Offices-E-008-P | REV |